

Windows 7 (32 bit)/ Ticonnect compatibility (64bit explained further down)

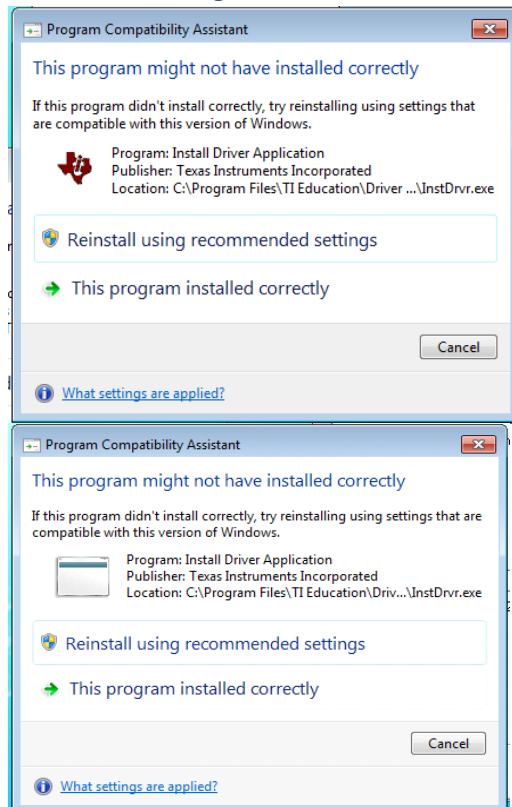
For those who don't know, Windows 7 is Microsoft's newest operating system was officially released on October 22, 2009 to the public (orders are available on Microsoft's website, amazon.com, newegg.com, and other places like that). While you may be thinking that TI-Connect might not work with Windows 7, but believe it or not you have nothing to worry about with TI-connect and Windows 7 compatibility.

This explanation will cover all versions of Windows 7(Home Premium 32bit and 64bit, Professional 32bit and 64bit, Ultimate 32bit and 64bit)

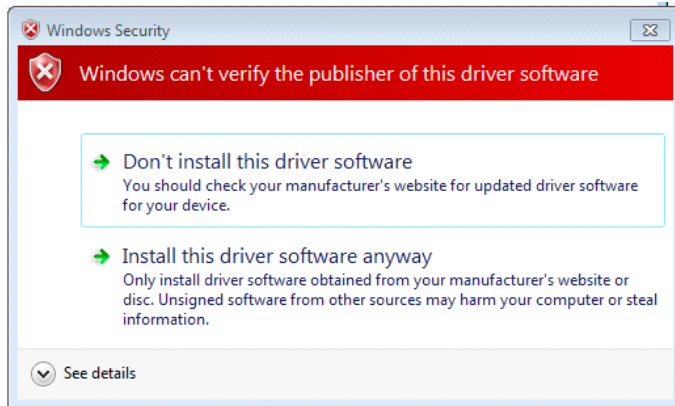
32bit will be covered first, and 64bit will be covered second (32bit is basically a repeat of the setup on Vista, so if you have seen Vista's setup I recommend skipping to the 64 bit explanation).

32 BIT (Windows 7 Home Premium, Professional, Ultimate)

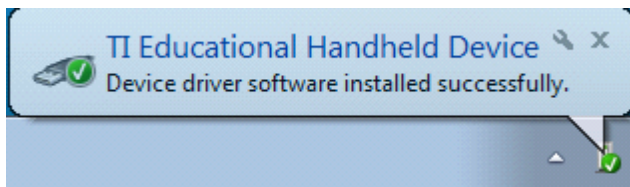
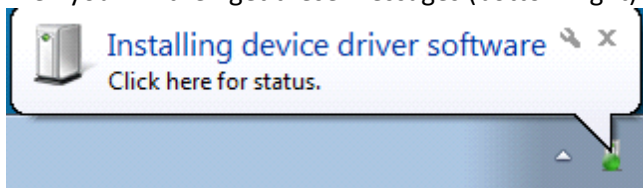
When installing TI-connect (1.6) in Windows 7 (32bit) you will first get these messages:



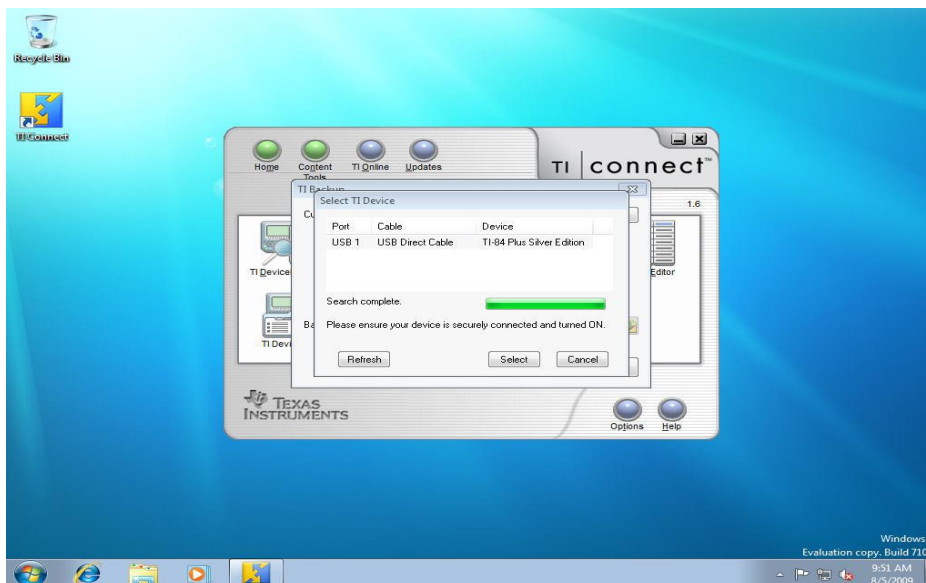
Choose "This program installed correctly" on both.
Then this message will come up:



(Similar to Vista)
Choose "Install this driver software anyway"
Then you will then get these messages (bottom right):



Here is the result:



Windows 7 64bit: (all versions)

Luckily, Texas Instruments has finally made a 64bit driver for their calculators (except for the Nspire series), so how do you get this you may be wondering (if you didn't already hear about it). Well it is actually very simple.

Before connecting your calculator (you will just get an error message for incompatible drivers if you don't follow these steps).

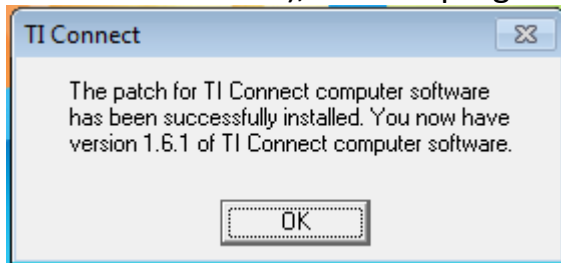
First, install the regular TI-Connect (read 32bit support for info on how to get and install the original TI-Connect).

Second, go to this link to get the 1.6.1 update for TI-Connect:

<http://education.ti.com/educationportal/downloadcenter/SoftwareDetail.do?website=US&tabId=1&appId=183>

(Download the "TI Connect 1.6.1 Beta Patch for 64 Bit)

Third, simply click run to install it (or if you saved it to your computer double click on the file to run it), and the program does the rest until you get this message:

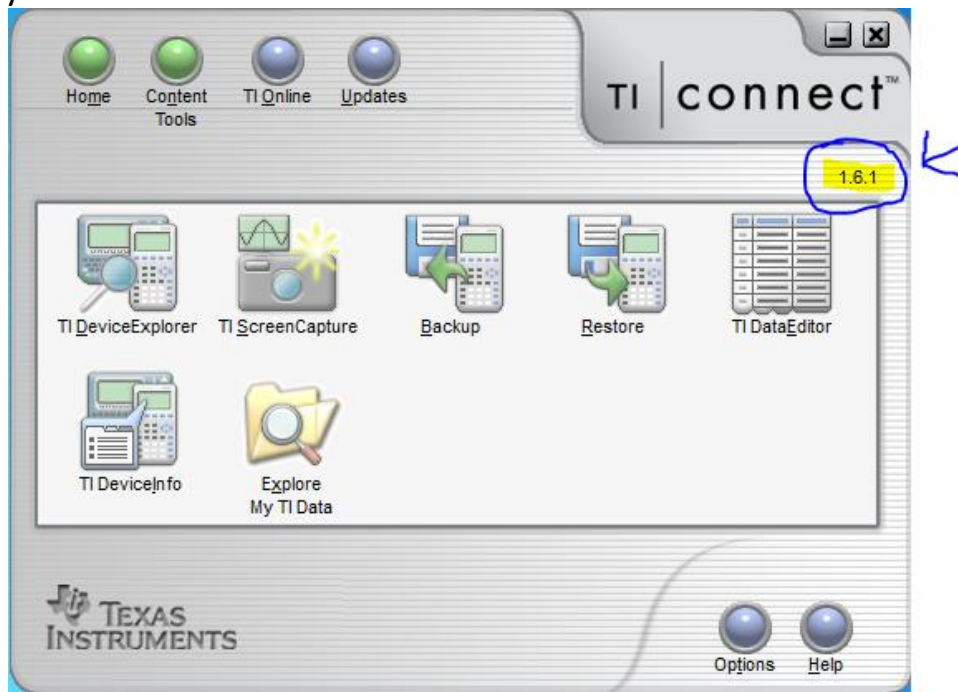


(Obviously this shows that it installed correctly, and you must click ok to finish it)

That's it you now have the capability to use TI-Connect through Windows 7 64 bit (or any other 64bit Windows Operating Systems).

To check to see if it did install it correctly, because you can't always rule out the fact that there can be errors sometimes with an installation, open TI-Connect, and

you should see this:



If you see 1.6.1 at the top right corner, then you are ready to start using TI-Connect, but if you just see 1.6, then you have to reinstall the 1.6.1 patch. Thanks to Texas Instruments for finally making this patch, anyone with a Windows 64bit O/S can now use TI-Connect.

However, if for some reason you want to use TI-Connect in XP Mode then read the second document "Windows 7 RC1 and TI-Connect" included in this package, but some of the info in the older file is now invalid since Windows 7 has been released. However, it is useful for those wanting to use XP Mode.

Thank you for downloading, and I hope you enjoy Windows 7!